

Access...Collaboration... **ENGAGEMENT!**

BUSINESS OPPORTUNITY
EXCHANGE 2025



REIMAGINE GROWTH

MARCH 21ST, Wyndham Rio Mar Puerto Rico Golf & Beach Resort



Puerto Rico
Minority Supplier
Development Council

PARTICIPATION CATALOG

CONTACT CARMEN PEÑA



787-303-7265



cpena@prmsdc.org



prmsdc.org/BOE2025

PRMSDC... your Best PARTNER



in DIVERSITY
and INCLUSION!



Puerto Rico
Minority Supplier
Development Council

In this catalog, you will find six (6) tailored options designed to **maximize your return on investment and enhance your visibility** at the event, all aligned with your plans and budget. You can choose to participate as a **SPONSOR** (pages 4-5), an **EXHIBITOR** (page 7), or explore **CO-SPONSORSHIP OPPORTUNITIES** (page 6) to promote your business. Additionally, you have the option to include an **ADVERTISEMENT** in the Event Program (page 7) or simply attend the event (page 8).

For more than 40 years, this event have been trusted and endorsed by hundreds of MBEs.



Concurrent Sessions:

DYNAMIC SESSIONS designed to spark insightful conversations and tackle thought-provoking topics.



Connecting Sessions

Business card exchange, networking lounge and matchmakings:
IT'S ALL ABOUT CONNECTING!



Exhibition Hall:

Your opportunity to introduce yourself, connect with potential customers, and build meaningful relationships.
MEET, CONNECT, & ENGAGE!



Networking Lounge:

UNWIND AND CONNECT in a relaxed setting. Network with attendees and stakeholders on a more personal level.

If your goal is to enhance the **continued flow of leads** to your company, **CONTACT US**. We have **EC-CONNECT PROGRAM** which include admissions to all institutional events and multiple benefits to leverage your value proposition.

PRMSDC is a 501(c)(3) non-profit organization affiliated to the National Minority Supplier Development Council (NMSDC), a leading organization that advances business opportunities for certified minorities. Proprietary & Confidential. ©2025 PRMSDC©. All rights reserved.

Option 1

Sponsorships are all about

RECOGNITION AND BRANDING!



The optimal choice for simultaneously achieving multiple objectives.

MAIN SPONSORSHIP, PACKAGES

BENEFITS	DIAMOND \$9,000	STRATEGIC \$7,500
<div><div><div></div><div></div></div><div>Full day admissions</div></div>	16	13
<div><div><div></div><div></div></div><div>Exhibition (skirted) tables and chairs</div></div>	<div><div></div><div>Premier location- 2 tables & 6 chairs</div></div>	<div><div></div><div>Prominent location- 2 tables & 6 chairs</div></div>
<div><div><div></div><div></div></div><div>Morning Session Sponsoring</div></div>	<div><div></div><div>All</div></div>	<div><div></div><div>Plenary</div></div>
<div><div><div></div><div></div></div><div>Official BOE Program</div></div>	<div><div></div><div>Full page ad</div></div>	<div><div></div><div>Full page ad</div></div>
<div><div><div></div><div></div></div><div>Participation in the concurrent sessions</div></div>	<div><div></div><div>Moderator privilege</div></div>	<div><div></div><div>Company video during welcome session</div></div>
<div><div><div></div><div></div></div><div>Brand Recognition</div></div>	<div><div></div><div>Upgraded benefits</div></div>	<div><div></div><div><div></div></div></div>
<div><div><div></div><div></div></div><div>Verbal recognition during the event</div></div>	<div><div></div><div>Standing at the Opening Ceremony</div></div>	<div><div></div><div><div></div></div></div>
<div><div><div></div><div></div></div><div>Logo in the Official Entrance Signage</div></div>	<div><div></div><div><div></div></div></div>	<div><div></div><div><div></div></div></div>
<div><div><div></div><div></div></div><div>Stand up banner</div></div>	<div><div></div><div><div></div></div></div>	<div><div></div><div><div></div></div></div>
<div><div><div></div><div></div></div><div>PRMSDC MBE Digital Catalog</div></div>	<div><div></div><div>-</div></div>	<div><div></div><div>-</div></div>

=Included

Option 1

Sponsorships are all about

RECOGNITION AND BRANDING!



AND PRICES



SIGNATURE \$5,500

10

- Prominent location-
2 tables & 6 chairs
- Concurrent
- Half page ad



-

PARTNER \$3,250

5

- 1 table & 2 chairs
- Matchmaking
- Half page ad



-

ENTREPRENEUR (only for MBEs) \$2,000

3

- 1 table & 2 chairs-located
among corporate sponsors
- Meeting priority option in the
Matchmaking Session ***
- Full page



- Full page capability statement
- 1 year

*** Depending on corporate interests and received requests.

Visit us on the web at www.prmsdc.org

Option 2

Exclusive Sponsorships

IT IS ALL ABOUT VISIBILITY!



Suggested to participants not interested in an exhibition space.



GOODIE BAGS SPONSOR

\$2,000

Official Goodie Bags

- ▶ Branded bags with company logo for all attendees.*
- ▶ Three full day admissions
- ▶ Full page Ad
- ▶ Brand recognition
- ▶ Logo in official signage and welcome video
- ▶ Priority in matchmaking session. See page 5 note.



LANYARD SPONSOR

\$2,000

Official Lanyards

- ▶ Branded lanyard with company name/logo for all attendees.*
- ▶ Three full day admissions
- ▶ Full page Ad
- ▶ Brand recognition
- ▶ Logo in official signage and welcome video
- ▶ Priority in matchmaking session. See page 5 note.

***Goodie Bags and Lanyard provided by sponsor.**

Option 3

Co-Sponsorships

IT IS ALL ABOUT MARKETING!

Suggested to general admission attendees, both Corporate and MBEs



LUNCH CO-SPONSOR

Lunch Stand Alone
\$800

Opportunity to include company's promotional material in all lunch tables, at each chair (goodies, literature, business cards, postcards and similar**).

- ▶ One Full Day Admission
- ▶ Company listed in the event program
- ▶ One Company stand up banner
- ▶ Verbal acknowledgment during the event

****To be coordinated previously with PRMSDC.**



CLOSING NETWORKING LOUNGE CO-SPONSOR

\$1,500

Opportunity to distribute company's promotional material (goodies, literature, business cards, branded cups or similar**), during the one hour activity.

- ▶ Two Full Day Admissions
- ▶ Logo in the Official Signage
- ▶ Brand Recognition
- ▶ Promoted as Co-Sponsor in the Event Program
- ▶ One Company stand up banner

Option 4

EXHIBITOR PACKAGE



On a budget? This is your showcase alternatives.

Suggested to participants interested in an exhibition space without the branding and marketing costs.



CORPORATE MEMBER

\$2,000

- ▶ Three Full Day Admissions
- ▶ 1 skirted table - 2 chairs
- ▶ Participation in all Morning Sessions
- ▶ Participation in the Matchmaking Session
- ▶ Company's logo in selected promotional material
- ▶ Promoted in the Event Program
- ▶ One stand up banner at a designated area



MBE COMPANY

\$1,500

- ▶ Two Full Day Admissions
- ▶ 1 skirted table - 2 chairs
- ▶ Participation in all sessions including matchmaking***
- ▶ One Full Page capability statement in the MBE Digital Catalog (1 year)
- ▶ Promoted in the Event Program
- ▶ One stand up banner at a designated area

NOTE: See page 5 for ***. This is the EC-Connect Program Option (or MBE Annual Sponsor Option).

Option 5

EVENT PROGRAM RATES

Showcase your company in the one document everyone will hold onto, **even if you are unable attend!**

+ Full Page Inside Cover

• \$450

+ Full Page Back Cover

• \$450

+ Full Page Inside Back Cover

• \$500

+ Full Page ROP

• \$350

FULL PAGE

- Full Color
- 5 w x 8 h inches
- 266 DPI
- JPEG
- PDF

Option 6

General Admissions Fees



Access to Full Day activities. It does not include an exhibition table (prices per person).

Regular Prices*

- Corporate Member: **\$300**
- Certified Supplier: **\$250**

* Until Friday, March 7, 2025

At Door Prices*

- Corporate Member: **\$350**
- Certified Supplier: **\$300**

* Valid from March 8-March 21, 2025

Other Attendees

\$350

Fixed Rate



Dates to REMEMBER

- **FEBRUARY 21, 2025:**
Closing date for exhibition space sale
- **FEBRUARY 21, 2025:**
Due date to provide corporate requests, ads, capability statements, videos, logos and any other material.
- **MARCH 7, 2025:**
Due date to pay regular prices on admissions
- **MARCH 7, 2025:**
Due date to provide attendees names. After 3/7/2025 attendees will receive a badge holder to insert their business cards or write their names. It also applies to registration at the door.
- **MARCH 8-21, 2025:**
At Door prices will apply



NOTES

- **One on One meetings** are held on each exhibitor's booth at the showcase hall.
- **PRSMDC is not responsible** for cancellations or meetings requested by members
- **Matchmaking Session** is a coordinated meeting per corporate member request with pre-qualified MBEs.
- **Corporate members** are multinational company representatives.
- **Certified Supplier** are the rates for MBEs.
- **Other attendees** are the rates for non-MBEs.
- **Stand up banners** are placed in a designated location at the exhibition hall. Exhibitors agree to this condition.

DON'T MISS OUT!

Register today and explore unparalleled business opportunities in 2025!

CONTACT CARMEN PEÑA



787-303-7265



cpena@prmsdc.org



prmsdc.org/boe2025

2025 UPCOMING

Institutional Events



JUN.
11th

**MBE2MBE EVENT &
MBEIC ANNUAL MEETING**








NOV.
2-5

**NMSDC NATIONAL CONFERENCE
MIAMI, FL**

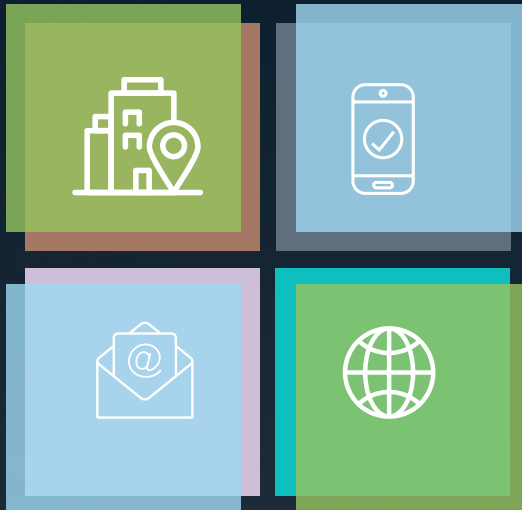
DEC.
5th

RECOGNITION AWARDS EVENT

Plus:

-  **Regional Business Connect**
-  **Meet & Greet**
-  **MBE2MBE Coaching Sessions**
-  **Quarterly FB Live Power Breaks**
-  **Stay tuned for more!**

PRMSDC...your Best Partner in Diversity and Inclusion!



VIG TOWER

1225 Ponce de León Ave.
15th Floor, Suite 1505
San Juan, PR 00907-3921

(787)- 627-7272, Ext. 925, 920

cpena@prmsdc.org

prmsdc.org

[f](#) [in](#) [▶](#)

PRMSDC is a 501(c)(3) non-profit organization affiliated to the National Minority Supplier Development Council (NMSDC), a leading organization that advances business opportunities for certified minorities.

*Proprietary & Confidential. ©2025 PRMSDC©.
All rights reserved.*